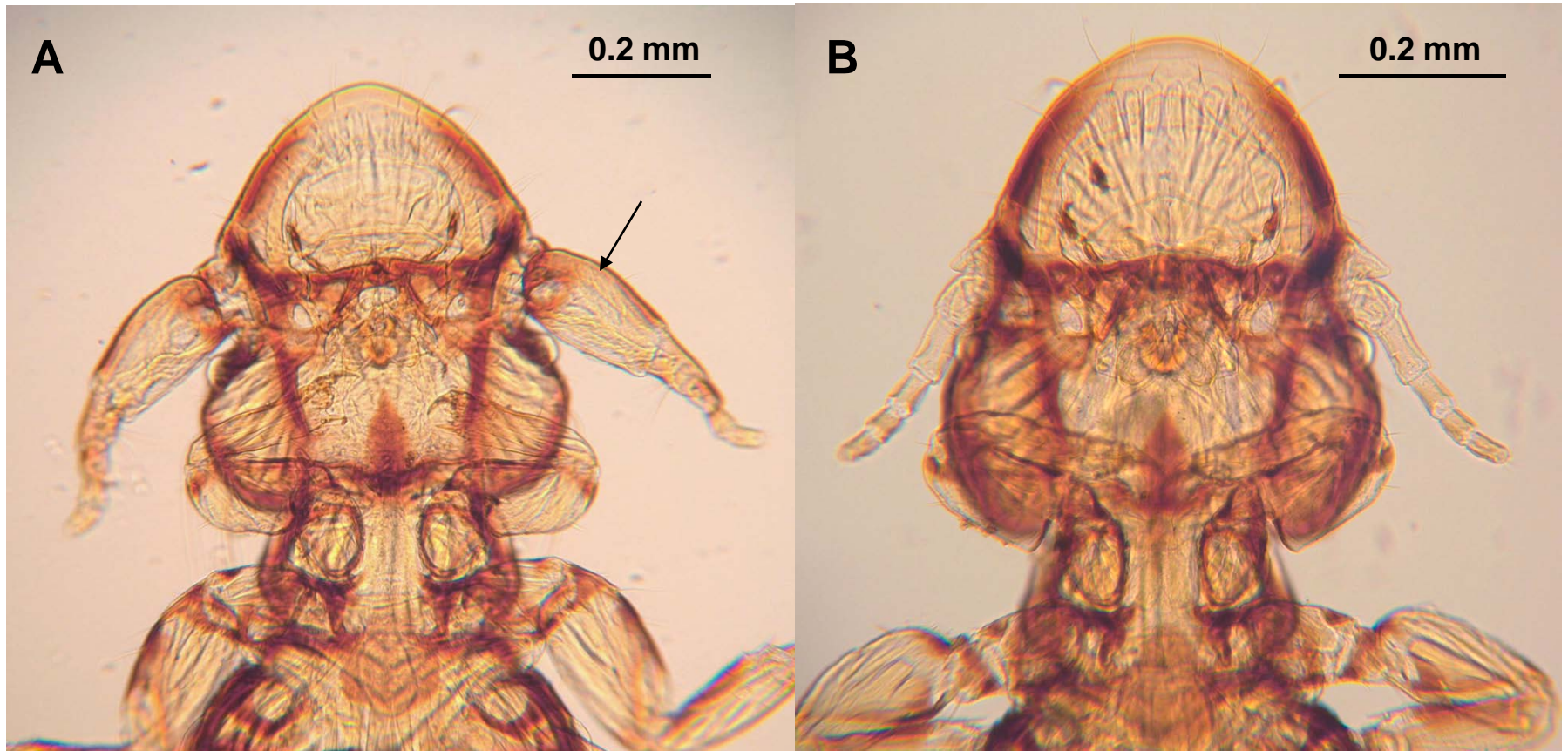


*Cuclostogaster heterographus*: male (A); female (B). Note that basal antennal segment in the male is enlarged (arrow), a sexually dimorphic character.



*Cuclotogaster heterographus*. Note extension of antennal segment (arrows) in male (A, enlarged in B).

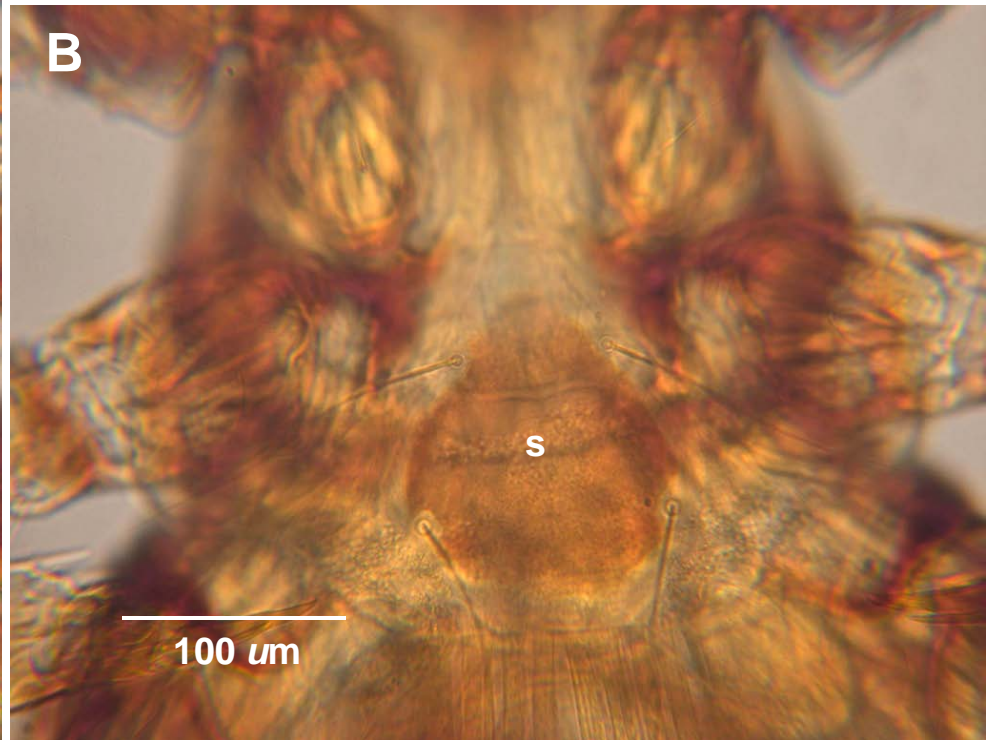




*Cuclostogaster heterographus*: posterior; male (A), female (B).



*Cuclotogaster heterographus*: sternal plate (s); male (A), female (B).





*Cuclotogaster heterographus*: mandibles (A); paratergal plates (B).

